



Hirtshals Havn
PORT OF HIRTSHALS

**LET'S CREATE NEW
BLUE OCEANS!**

WEATHER STATISTICS

2013-2019





INTRODUCTION

The statistical ground material has been collected, processed and graphically presented by the Port of Hirtshals.

WIND STATISTICS

Gauge identification:	Port of Hirtshals 1410
Data period:	1 January 2013 - 31 December 2019
Unit:	m/s
Calm:	0,0 – 0,2 m/s (0 Beaufort)

WATER LEVEL STATISTICS

Gauge identification:	Port of Hirtshals 1411 (DMI)
Data period:	1 January 2013 - 31 December 2019
Unit:	cm

WAVE STATISTICS

Gauge identification:	Port of Hirtshals 1041
Data period:	1 January 2013 – 31 December 2019
Unit:	cm

Wave height

The significant wave height H_s is defined as the average of the highest third of the waves.

If an equal number of all wave heights is presumed, the wave height, which is similar to the average of the highest third, will be 5/6 of the highest wave - i.e. H_s will be approximately 80% of the highest wave.



WIND DIRECTION STATISTICS

The values indicate the percentage distribution.

ANNUAL STATISTICS

Wind direction	From	To	Year
N	338	22.5	4.344
NE	22.5	67.5	9.86
E	67.5	113	15.38
SE	113	158	11.12
S	158	203	13.06
SW	203	248	19.89
W	248	293	20.88
NW	293	338	5.336
Calm	0	360	0.129
Total			100

STATISTICS - 1ST HALF OF THE YEAR

Wind direction	From	To	Jan	Feb	Mar	Apr	May	Jun
N	338	22.5	5.129	4.374	3.506	5.552	5.706	5.219
NE	22.5	67.5	6.928	10.65	11.41	15.39	16.27	10.05
E	67.5	113	23.84	13.8	21.8	16.54	14.29	8.69
SE	113	158	12.85	14.28	8.976	8.52	10.49	8.491
S	158	203	14.7	19.82	9.906	6.416	7.394	7.469
SW	203	248	17.23	20.57	23.16	21.26	22.37	26.62
W	248	293	14.21	11.94	15.27	20.35	18.08	26.8
NW	293	338	4.993	4.437	5.865	5.764	5.27	6.536
Calm	0	360	0.12	0.134	0.1	0.212	0.135	0.127
Total			100	100	100	100	100	100

STATISTICS - 2ND HALF OF THE YEAR

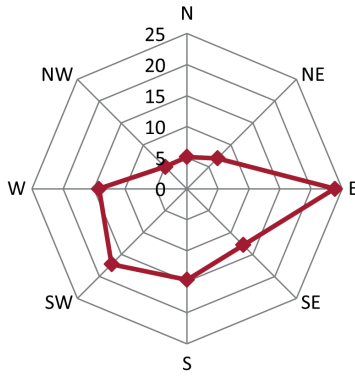
Wind direction	From	To	Jul	Aug	Sep	Oct	Nov	Dec
N	338	22.5	4.506	3.059	4.38	3.328	4.514	2.86
NE	22.5	67.5	9.803	4.586	9.39	11.55	8.562	3.736
E	67.5	113	9.134	8.714	18	21.63	21.07	7.074
SE	113	158	8.337	12.22	14.67	11.87	11.7	11.05
S	158	203	6.521	15.01	12.75	14.17	21.68	20.9
SW	203	248	27.31	20.73	12.26	14.61	8.776	23.79
W	248	293	30.01	31.69	22.23	17.8	19.41	22.74
NW	293	338	4.244	3.907	6.168	4.951	4.135	7.76
Calm	0	360	0.138	0.083	0.149	0.103	0.154	0.088
Total			100	100	100	100	100	100



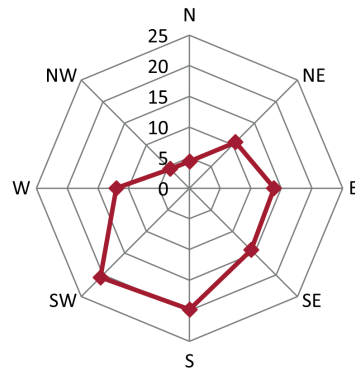
WIND DIRECTION STATISTICS - 1ST HALF OF THE YEAR

The values indicate the percentage distribution.

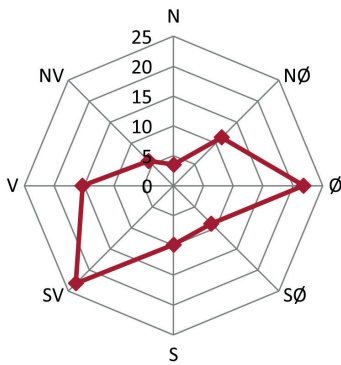
January



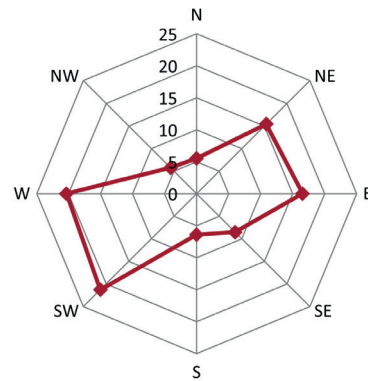
February



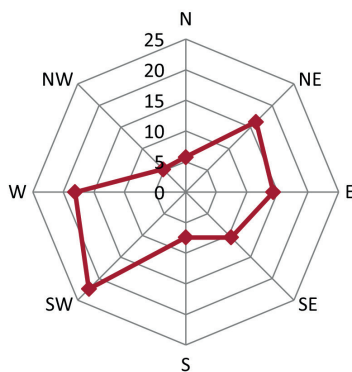
Marts



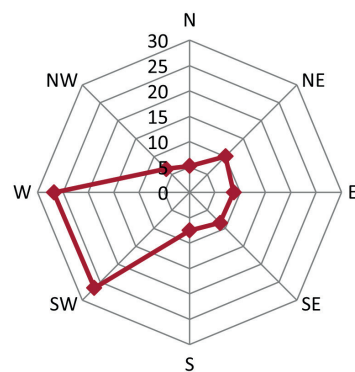
April



May



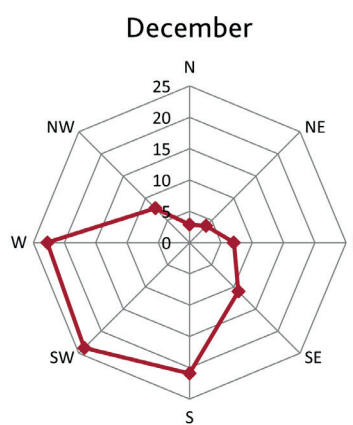
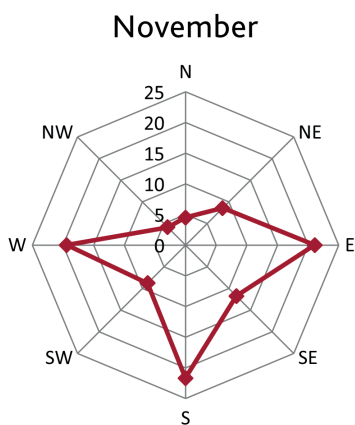
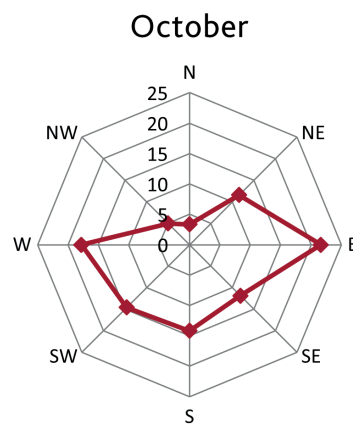
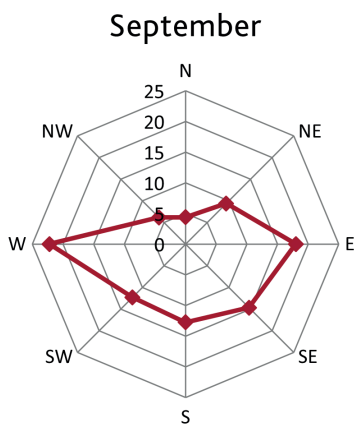
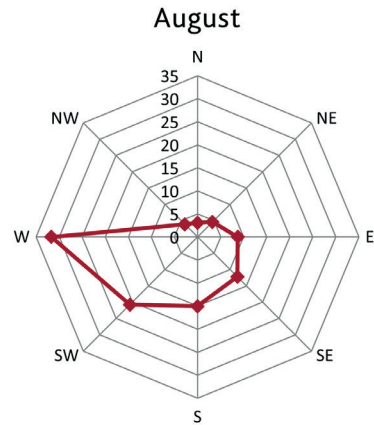
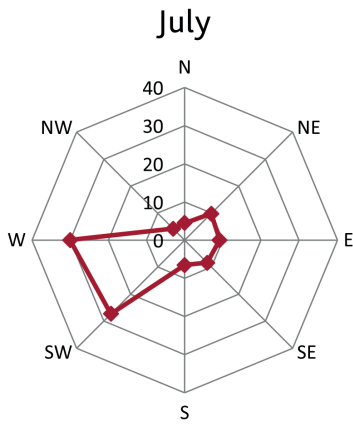
June





WIND DIRECTION STATISTICS - 2ND HALF OF THE YEAR

The values indicate the percentage distribution.





WIND SPEED STATISTICS

The values indicate the percentage distribution.

From	to	Jan	Feb	Mar	Apr	May	Jun	Jul	Aug	Sep	Oct	Nov	Dec
0	1	0.791	0.453	0.755	1.254	1.365	0.926	1.243	0.63	0.997	0.568	0.323	4.191
1	2	3.368	2.938	3.273	5.287	6.481	4.966	5.509	3.677	4.672	3.029	2.225	2.34
2	3	7.181	6.845	6.416	8.497	10.85	9.557	10.34	8.263	10.67	6.135	6.063	6.41
3	4	9.752	9.278	10.99	11.44	13.99	12.17	12.39	12.81	13.77	9.319	10.81	8.339
4	5	10.59	11.57	10.38	11.43	13.16	12.36	10.88	14.25	12.91	10.71	14.24	10.04
5	6	10.5	13.06	10.33	10.62	11.83	10.78	9.726	11.41	12.36	11.18	11.98	8.78
6	7	10.41	10.89	9.822	9.407	9.566	9.396	8.455	9.185	8.638	9.996	8.952	8.378
7	8	8.556	9.667	9.281	8.669	7.641	8.107	7.264	8.09	6.463	9.235	7.752	8.175
8	9	7.671	10.06	8.221	7.703	5.642	5.977	6.78	7.914	5.125	7.888	6.424	7.404
9	10	7.129	8.217	7.664	6.33	5.216	5.96	6.498	6.317	4.741	7.294	5.823	6.78
10	11	5.781	5.074	6.63	4.814	4.508	5.456	6.303	5.044	4.172	7.127	5.669	6.015
11	12	4.87	3.38	5.408	3.663	3.716	4.677	5.336	3.667	3.46	4.858	4.611	5.505
12	13	3.832	2.627	4.64	3.749	2.64	3.398	4.077	3.107	2.732	3.748	4.63	5.054
13	14	2.72	1.916	2.46	3.12	1.531	2.486	2.223	2.359	2.145	2.827	4.041	4.266
14	15	1.803	1.563	1.186	1.985	1.009	1.848	1.416	1.488	2.241	2.503	2.638	2.877
15	16	1.167	0.986	0.823	0.907	0.609	1.132	0.801	0.755	1.874	1.438	1.696	1.951
16	17	1.115	0.668	0.57	0.645	0.227	0.593	0.423	0.531	1.41	0.882	0.9	1.19
17	18	0.869	0.474	0.502	0.281	0.022	0.182	0.237	0.294	0.679	0.52	0.552	0.771
18	19	0.619	0.209	0.256	0.156	0	0.021	0.077	0.115	0.315	0.411	0.334	0.526
19	20	0.496	0.088	0.087	0.04	0	0.003	0.016	0.054	0.238	0.254	0.195	0.304
20	21	0.321	0.032	0.023	0.003	0	0	0	0.013	0.175	0.029	0.079	0.32
21	22	0.143	0.007	0.087	0	0	0	0	0.006	0.129	0.051	0.038	0.088
22	23	0.071	0	0.049	0	0	0	0	0.01	0.036	0.003	0.004	0.046
23	24	0.075	0	0.006	0	0	0	0	0.006	0.026	0	0.004	0.042
24	25	0.058	0	0.139	0	0	0	0	0	0.01	0	0.008	0.085
25	26	0.032	0	0	0	0	0	0	0	0.01	0	0.004	0.085
26	27	0.039	0	0	0	0	0	0	0	0.003	0	0	0.026
27	28	0.029	0	0	0	0	0	0	0	0	0	0	0.01
28	29	0	0	0	0	0	0	0	0	0	0	0	0
29	30	0.003	0	0	0	0	0	0	0	0	0	0	0
30	31	0	0	0	0	0	0	0	0	0	0	0	0
31	32	0	0	0	0	0	0	0	0	0	0	0	0
32	33	0	0	0	0	0	0	0	0	0	0	0	0
33	34	0	0	0	0	0	0	0	0	0	0	0	0
34	35	0	0	0	0	0	0	0	0	0	0	0	0
35	36	0	0	0	0	0	0	0	0	0	0	0	0
36	37	0	0	0	0	0	0	0	0	0	0	0	0
37	38	0	0	0	0	0	0	0	0	0	0	0	0
38	39	0	0	0	0	0	0	0	0	0	0	0	0
39	40	0	0	0	0	0	0	0	0	0	0	0	0
Total		100	100	100	100	100	100	100	100	100	100	100	100



WIND SPEED STATISTICS, ACCUMULATED

The values indicate the percentage distribution.

From	To	Jan	Feb	Mar	Apr	May	Jun	Jul	Aug	Sep	Oct	Nov	Dec
0	1	0.791	0.453	0.755	1.254	1.365	0.926	1.243	0.63	0.997	0.568	0.323	4.191
1	2	4.16	3.391	4.028	6.541	7.846	5.891	6.751	4.307	5.668	3.597	2.548	6.531
2	3	11.34	10.24	10.44	15.04	18.69	15.45	17.09	12.57	16.34	9.733	8.611	12.94
3	4	21.09	19.51	21.43	26.48	32.68	27.62	29.49	25.38	30.11	19.05	19.42	21.28
4	5	31.69	31.08	31.81	37.9	45.84	39.98	40.37	39.63	43.02	29.76	33.66	31.32
5	6	42.19	44.14	42.14	48.53	57.67	50.76	50.1	51.04	55.38	40.94	45.65	40.1
6	7	52.6	55.03	51.97	57.94	67.24	60.16	58.55	60.23	64.01	50.93	54.6	48.48
7	8	61.16	64.7	61.25	66.6	74.88	68.27	65.81	68.32	70.48	60.17	62.35	56.66
8	9	68.83	74.76	69.47	74.31	80.52	74.24	72.59	76.23	75.6	68.06	68.78	64.06
9	10	75.96	82.98	77.13	80.64	85.74	80.2	79.09	82.55	80.34	75.35	74.6	70.84
10	11	81.74	88.05	83.76	85.45	90.24	85.66	85.4	87.59	84.51	82.48	80.27	76.85
11	12	86.61	91.43	89.17	89.11	93.96	90.34	90.73	91.26	87.97	87.33	84.88	82.36
12	13	90.44	94.06	93.81	92.86	96.6	93.73	94.81	94.37	90.71	91.08	89.51	87.41
13	14	93.16	95.97	96.27	95.98	98.13	96.22	97.03	96.73	92.85	93.91	93.55	91.68
14	15	94.96	97.54	97.46	97.97	99.14	98.07	98.45	98.21	95.09	96.41	96.19	94.55
15	16	96.13	98.52	98.28	98.88	99.75	99.2	99.25	98.97	96.97	97.85	97.88	96.51
16	17	97.24	99.19	98.85	99.52	99.98	99.79	99.67	99.5	98.38	98.73	98.78	97.7
17	18	98.11	99.66	99.35	99.8	100	99.98	99.91	99.8	99.06	99.25	99.34	98.47
18	19	98.73	99.87	99.61	99.96	100	100	99.98	99.91	99.37	99.66	99.67	98.99
19	20	99.23	99.96	99.7	100	100	100	100	99.96	99.61	99.92	99.86	99.3
20	21	99.55	99.99	99.72	100	100	100	100	99.98	99.78	99.95	99.94	99.62
21	22	99.69	100	99.81	100	100	100	100	99.98	99.91	100	99.98	99.71
22	23	99.76	100	99.85	100	100	100	100	99.99	99.95	100	99.98	99.75
23	24	99.84	100	99.86	100	100	100	100	100	99.98	100	99.99	99.79
24	25	99.9	100	100	100	100	100	100	100	99.99	100	100	99.88
25	26	99.93	100	100	100	100	100	100	100	100	100	100	99.96
26	27	99.97	100	100	100	100	100	100	100	100	100	100	99.99
27	28	100	100	100	100	100	100	100	100	100	100	100	100
28	29	100	100	100	100	100	100	100	100	100	100	100	100
29	30	100	100	100	100	100	100	100	100	100	100	100	100
30	31	100	100	100	100	100	100	100	100	100	100	100	100
31	32	100	100	100	100	100	100	100	100	100	100	100	100
32	33	100	100	100	100	100	100	100	100	100	100	100	100
33	34	100	100	100	100	100	100	100	100	100	100	100	100
34	35	100	100	100	100	100	100	100	100	100	100	100	100
35	36	100	100	100	100	100	100	100	100	100	100	100	100
36	37	100	100	100	100	100	100	100	100	100	100	100	100
37	38	100	100	100	100	100	100	100	100	100	100	100	100
38	39	100	100	100	100	100	100	100	100	100	100	100	100
39	40	100	100	100	100	100	100	100	100	100	100	100	100



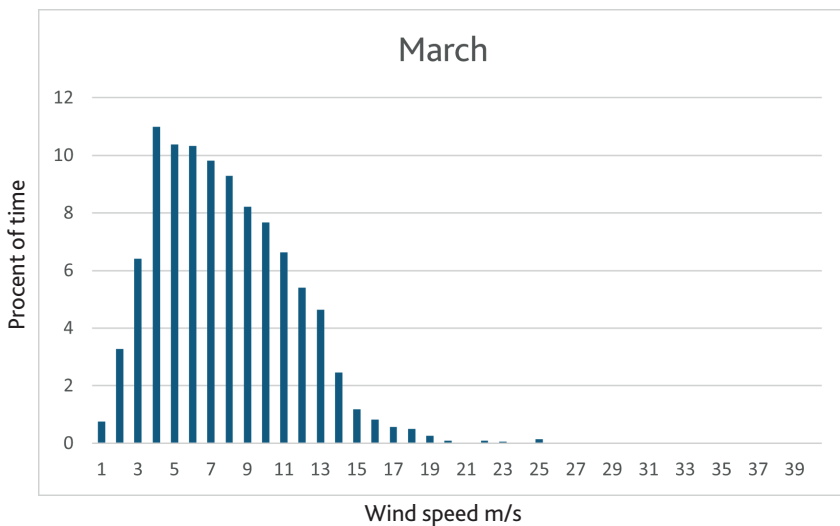
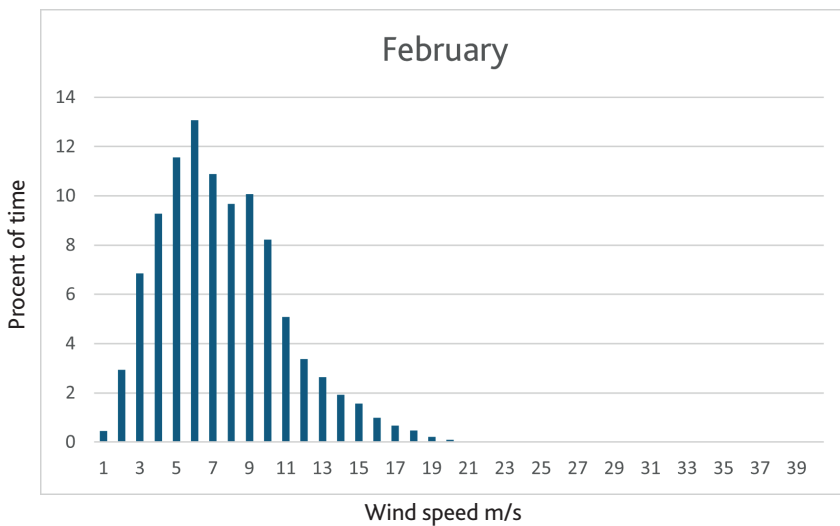
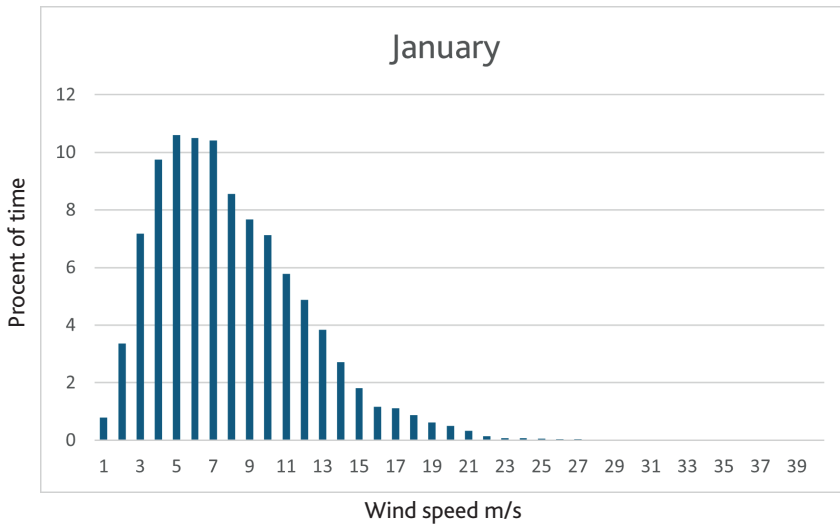
WIND SPEED STATISTICS, INVERSE ACCUMULATED

The values indicate the percentage distribution.

From	To	Jan	Feb	Mar	Apr	May	Jun	Jul	Aug	Sep	Oct	Nov	Dec
0	1	99.209	99.547	99.245	98.746	98.635	99.074	98.757	99.370	99.003	99.432	99.677	95.809
1	2	95.840	96.609	95.972	93.459	92.154	94.109	93.249	95.693	94.332	96.403	97.452	93.469
2	3	88.659	89.764	89.556	84.962	81.306	84.551	82.907	87.430	83.661	90.267	91.389	87.059
3	4	78.907	80.487	78.570	73.523	67.316	72.381	70.513	74.619	69.890	80.949	80.576	78.720
4	5	68.313	68.918	68.191	62.095	54.158	60.022	59.630	60.369	56.981	70.244	66.336	68.678
5	6	57.808	55.857	57.857	51.471	42.327	49.237	49.904	48.957	44.625	59.064	54.352	59.898
6	7	47.398	44.970	48.035	42.064	32.761	39.841	41.449	39.772	35.986	49.068	45.400	51.520
7	8	38.843	35.304	38.754	33.395	25.120	31.734	34.185	31.682	29.524	39.832	37.648	43.345
8	9	31.172	25.241	30.532	25.692	19.478	25.757	27.405	23.768	24.398	31.945	31.225	35.941
9	10	24.043	17.024	22.869	19.363	14.263	19.797	20.907	17.451	19.657	24.651	25.401	29.161
10	11	18.262	11.951	16.238	14.549	9.755	14.341	14.604	12.407	15.485	17.524	19.732	23.147
11	12	13.393	8.571	10.830	10.886	6.039	9.664	9.269	8.740	12.025	12.666	15.121	17.642
12	13	9.561	5.943	6.189	7.137	3.399	6.265	5.192	5.632	9.294	8.918	10.491	12.588
13	14	6.841	4.027	3.730	4.017	1.868	3.779	2.969	3.274	7.148	6.091	6.450	8.322
14	15	5.038	2.464	2.544	2.032	0.859	1.931	1.553	1.786	4.907	3.588	3.812	5.446
15	16	3.871	1.478	1.721	1.125	0.250	0.799	0.753	1.030	3.033	2.150	2.116	3.494
16	17	2.756	0.810	1.150	0.480	0.022	0.206	0.330	0.499	1.622	1.268	1.216	2.305
17	18	1.887	0.336	0.648	0.199	0.000	0.024	0.093	0.205	0.944	0.748	0.664	1.533
18	19	1.268	0.127	0.392	0.043	0.000	0.003	0.016	0.090	0.629	0.337	0.330	1.007
19	20	0.772	0.039	0.305	0.003	0.000	0.000	0.000	0.035	0.391	0.083	0.135	0.703
20	21	0.451	0.007	0.282	0.000	0.000	0.000	0.000	0.022	0.215	0.055	0.056	0.382
21	22	0.308	0.000	0.194	0.000	0.000	0.000	0.000	0.016	0.086	0.003	0.019	0.294
22	23	0.237	0.000	0.146	0.000	0.000	0.000	0.000	0.006	0.050	0.000	0.015	0.248
23	24	0.162	0.000	0.139	0.000	0.000	0.000	0.000	0.000	0.023	0.000	0.011	0.206
24	25	0.104	0.000	0.000	0.000	0.000	0.000	0.000	0.000	0.013	0.000	0.004	0.121
25	26	0.071	0.000	0.000	0.000	0.000	0.000	0.000	0.000	0.003	0.000	0.000	0.036
26	27	0.032	0.000	0.000	0.000	0.000	0.000	0.000	0.000	0.000	0.000	0.000	0.010
27	28	0.003	0.000	0.000	0.000	0.000	0.000	0.000	0.000	0.000	0.000	0.000	0.000
28	29	0.003	0.000	0.000	0.000	0.000	0.000	0.000	0.000	0.000	0.000	0.000	0.000
29	30	0.000	0.000	0.000	0.000	0.000	0.000	0.000	0.000	0.000	0.000	0.000	0.000
30	31	0.000	0.000	0.000	0.000	0.000	0.000	0.000	0.000	0.000	0.000	0.000	0.000
31	32	0.000	0.000	0.000	0.000	0.000	0.000	0.000	0.000	0.000	0.000	0.000	0.000
32	33	0.000	0.000	0.000	0.000	0.000	0.000	0.000	0.000	0.000	0.000	0.000	0.000
33	34	0.000	0.000	0.000	0.000	0.000	0.000	0.000	0.000	0.000	0.000	0.000	0.000
34	35	0.000	0.000	0.000	0.000	0.000	0.000	0.000	0.000	0.000	0.000	0.000	0.000
35	36	0.000	0.000	0.000	0.000	0.000	0.000	0.000	0.000	0.000	0.000	0.000	0.000
36	37	0.000	0.000	0.000	0.000	0.000	0.000	0.000	0.000	0.000	0.000	0.000	0.000
37	38	0.000	0.000	0.000	0.000	0.000	0.000	0.000	0.000	0.000	0.000	0.000	0.000
38	39	0.000	0.000	0.000	0.000	0.000	0.000	0.000	0.000	0.000	0.000	0.000	0.000
39	40	0.000	0.000	0.000	0.000	0.000	0.000	0.000	0.000	0.000	0.000	0.000	0.000

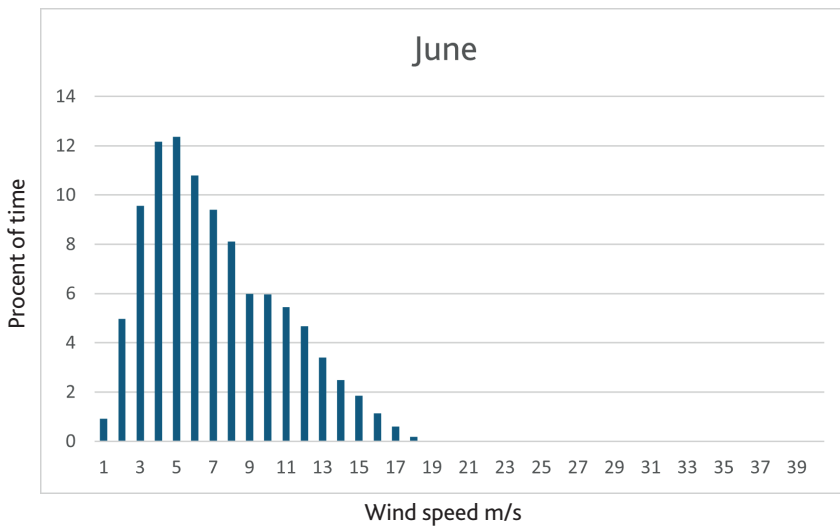
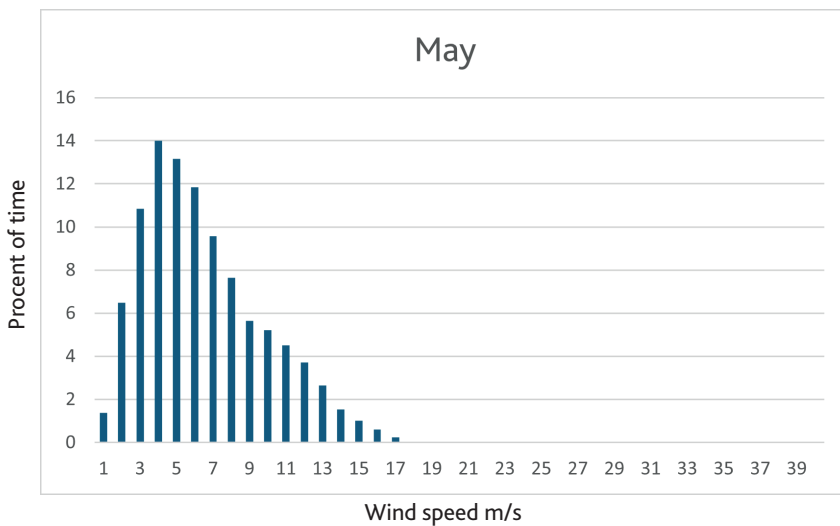
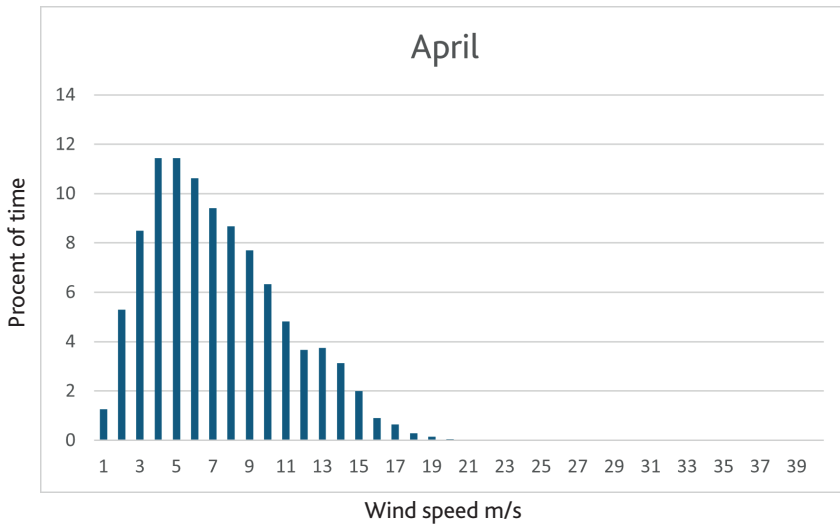


WIND STATISTICS - 1ST QUARTER



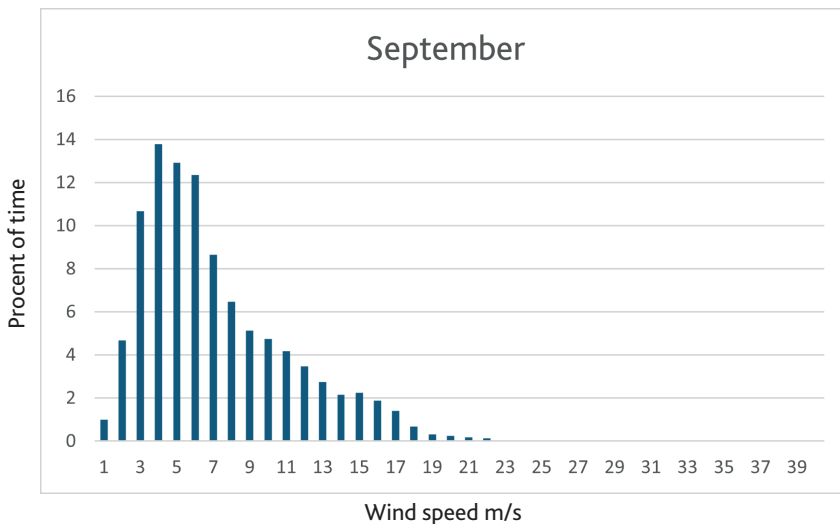
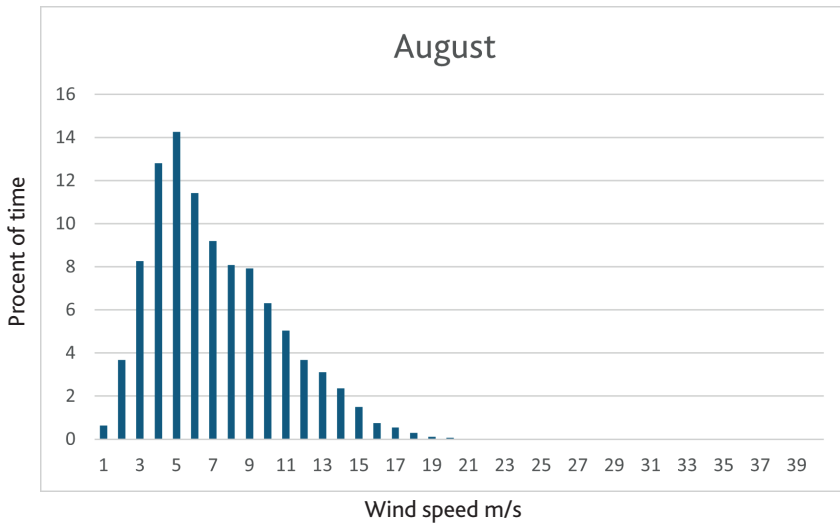
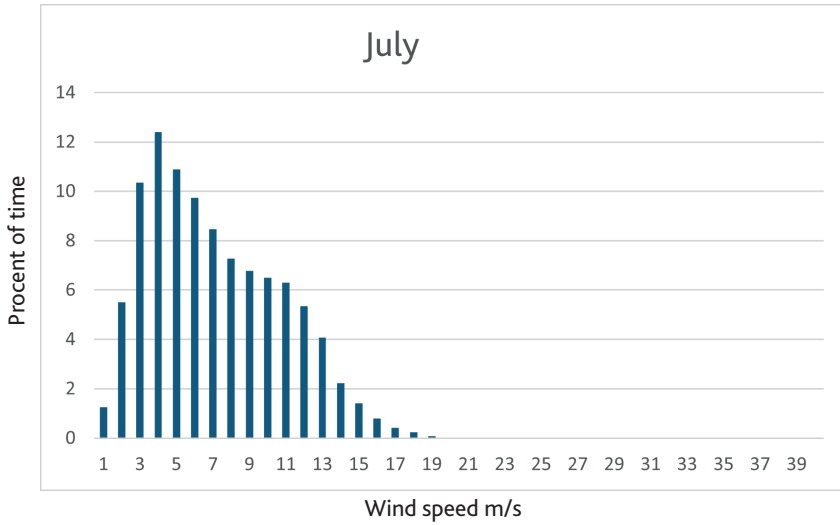


WIND STATISTICS - 2ND QUARTER



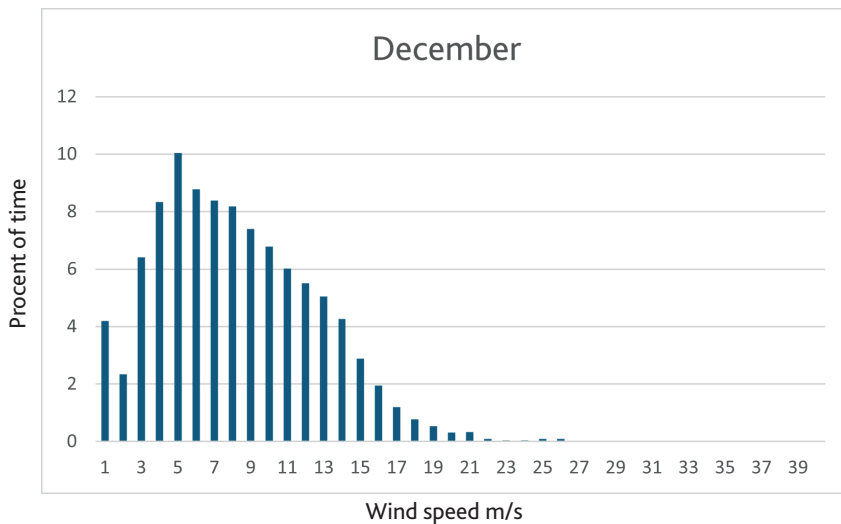
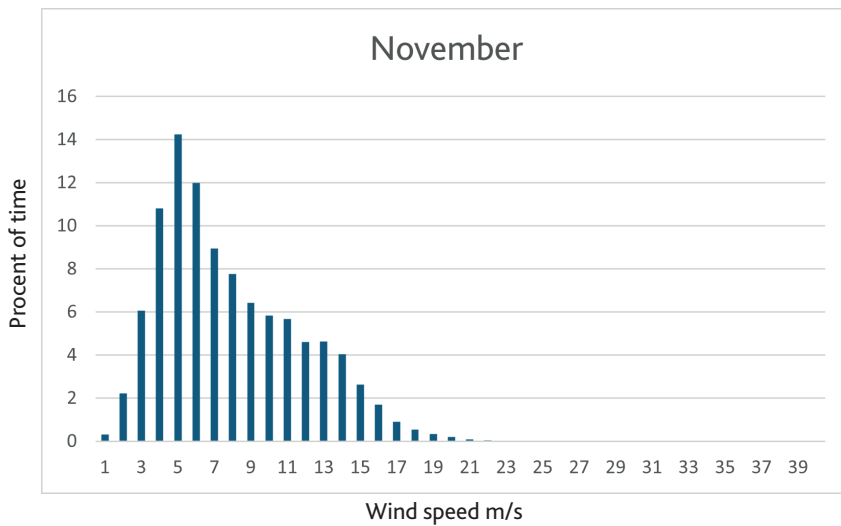
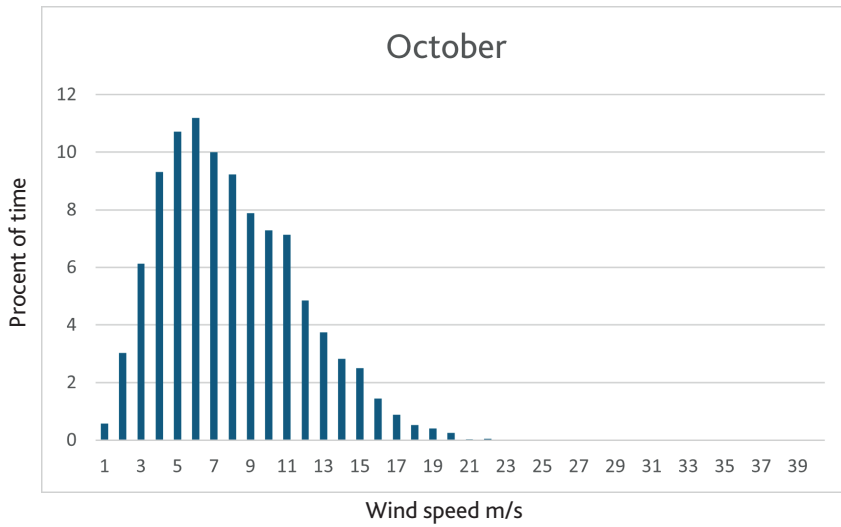


WIND STATISTICS - 3RD QUARTER





WIND STATISTICS - 4TH QUARTER





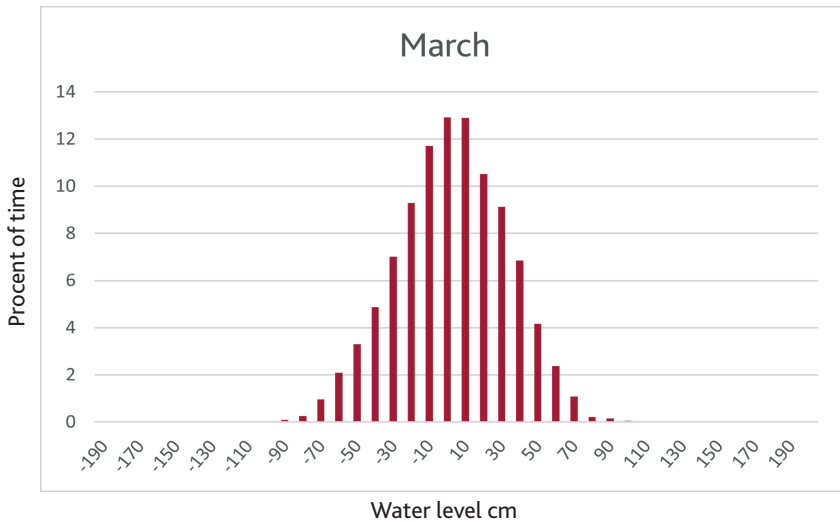
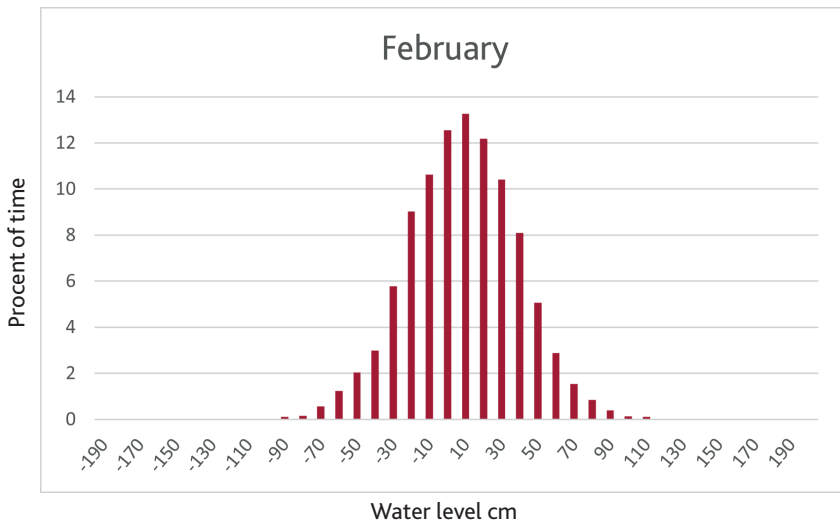
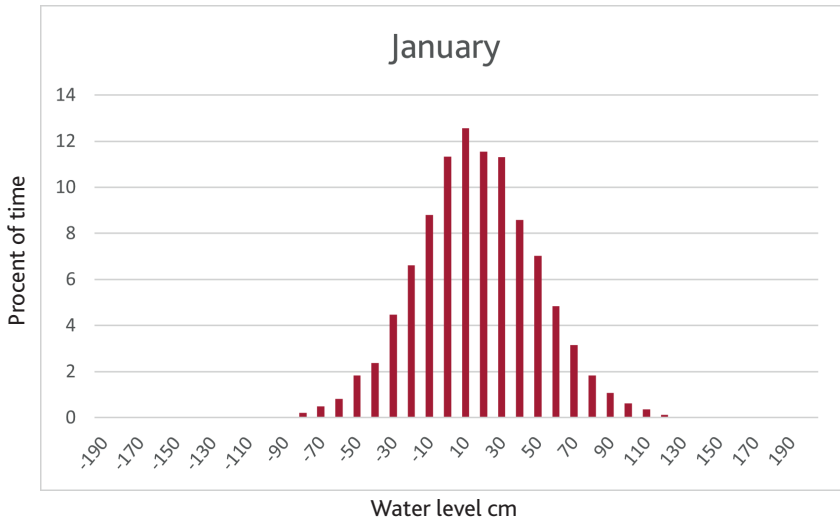
WATER LEVEL STATISTICS

The values indicate the percentage distribution.

cm	cm	Jan	Feb	Mar	Apr	May	Jun	Jul	Aug	Sep	Oct	Nov	Dec
-200	-190	0.000	0.000	0.000	0.000	0.000	0.000	0.000	0.000	0.000	0.000	0.000	0.000
-190	-180	0.000	0.000	0.000	0.000	0.000	0.000	0.000	0.000	0.000	0.000	0.000	0.000
-180	-170	0.000	0.000	0.000	0.000	0.000	0.000	0.000	0.000	0.000	0.000	0.000	0.000
-170	-160	0.000	0.000	0.000	0.000	0.000	0.000	0.000	0.000	0.000	0.000	0.000	0.000
-160	-150	0.000	0.000	0.000	0.000	0.000	0.000	0.000	0.000	0.000	0.000	0.000	0.000
-150	-140	0.000	0.000	0.000	0.000	0.000	0.000	0.000	0.000	0.000	0.000	0.000	0.000
-140	-130	0.000	0.000	0.000	0.000	0.000	0.000	0.000	0.000	0.000	0.000	0.000	0.000
-129	-120	0.000	0.000	0.000	0.000	0.000	0.000	0.000	0.000	0.000	0.000	0.000	0.000
-120	-110	0.000	0.000	0.000	0.000	0.000	0.000	0.000	0.000	0.000	0.000	0.000	0.000
-110	-100	0.000	0.014	0.032	0.000	0.000	0.000	0.000	0.000	0.000	0.000	0.000	0.000
-100	-90	0.006	0.106	0.100	0.000	0.000	0.000	0.000	0.000	0.000	0.000	0.000	0.000
-90	-80	0.211	0.156	0.256	0.000	0.000	0.000	0.000	0.000	0.000	0.000	0.000	0.000
-80	-70	0.480	0.555	0.969	0.020	0.000	0.000	0.000	0.000	0.000	0.109	0.000	0.085
-70	-60	0.817	1.237	2.097	0.165	0.000	0.000	0.000	0.000	0.000	0.273	0.000	0.095
-60	-50	1.825	2.040	3.302	0.427	0.170	0.055	0.000	0.000	0.000	0.911	0.281	0.167
-50	-40	2.373	2.984	4.871	1.803	1.230	0.147	0.016	0.000	0.103	2.663	1.066	0.438
-40	-30	4.474	5.774	7.009	5.443	3.332	1.276	0.279	0.131	1.652	4.204	2.454	0.863
-30	-10	6.614	9.020	9.281	10.906	8.781	3.861	2.203	1.043	3.735	5.606	5.193	1.899
-20	-10	8.809	10.621	11.718	15.806	14.932	10.521	7.161	5.527	6.582	8.180	7.542	3.890
-10	0	11.337	12.548	12.914	19.343	19.722	18.412	14.713	12.014	12.128	9.643	10.344	6.633
0	10	12.560	13.262	12.897	17.536	21.478	22.969	21.410	18.904	16.247	12.874	12.997	11.258
10	20	11.542	12.177	10.522	12.444	15.823	18.905	23.069	20.344	17.859	13.253	13.128	12.402
20	30	11.302	10.409	9.122	8.464	8.980	13.251	17.240	19.006	15.502	12.643	13.462	13.651
30	40	8.572	8.097	6.841	4.731	4.059	6.944	9.694	13.908	13.502	10.349	11.905	13.913
40	50	7.025	5.067	4.164	2.174	1.307	2.510	3.360	6.496	7.807	8.273	9.148	11.216
50	60	4.847	2.878	2.382	0.566	0.144	0.974	0.810	2.039	2.864	6.334	6.394	9.509
60	70	3.161	1.542	1.076	0.093	0.042	0.175	0.045	0.499	0.990	3.100	3.125	6.070
70	80	1.832	0.856	0.220	0.023	0.000	0.000	0.000	0.090	0.513	0.947	1.681	3.664
80	90	1.073	0.382	0.146	0.056	0.000	0.000	0.000	0.000	0.209	0.372	0.555	2.416
90	100	0.613	0.138	0.062	0.000	0.000	0.000	0.000	0.000	0.202	0.176	0.416	0.905
100	110	0.357	0.113	0.019	0.000	0.000	0.000	0.000	0.000	0.070	0.083	0.206	0.484
110	120	0.133	0.025	0.000	0.000	0.000	0.000	0.000	0.000	0.036	0.006	0.071	0.226
120	130	0.039	0.000	0.000	0.000	0.000	0.000	0.000	0.000	0.000	0.000	0.023	0.088
130	140	0.000	0.000	0.000	0.000	0.000	0.000	0.000	0.000	0.000	0.000	0.004	0.095
140	150	0.000	0.000	0.000	0.000	0.000	0.000	0.000	0.000	0.000	0.000	0.004	0.033
150	160	0.000	0.000	0.000	0.000	0.000	0.000	0.000	0.000	0.000	0.000	0.000	0.000
160	170	0.000	0.000	0.000	0.000	0.000	0.000	0.000	0.000	0.000	0.000	0.000	0.000
170	180	0.000	0.000	0.000	0.000	0.000	0.000	0.000	0.000	0.000	0.000	0.000	0.000
180	190	0.000	0.000	0.000	0.000	0.000	0.000	0.000	0.000	0.000	0.000	0.000	0.000
190	200	0.000	0.000	0.000	0.000	0.000	0.000	0.000	0.000	0.000	0.000	0.000	0.000
Total		100.000	100.000	100.000	100.000	100.000	100.000	100.000	100.000	100.000	100.000	100.000	100.000

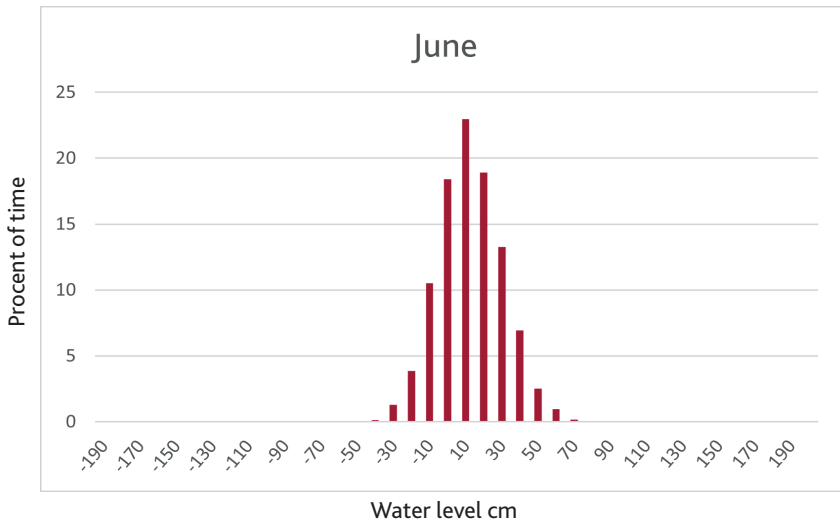
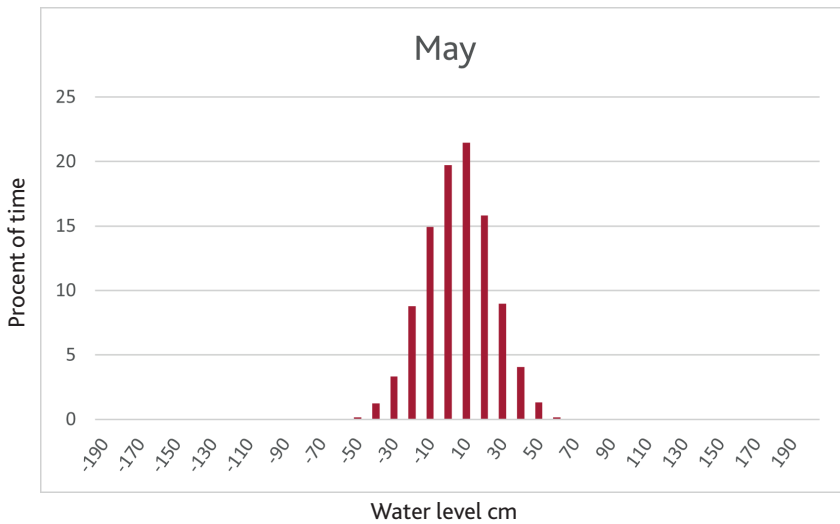
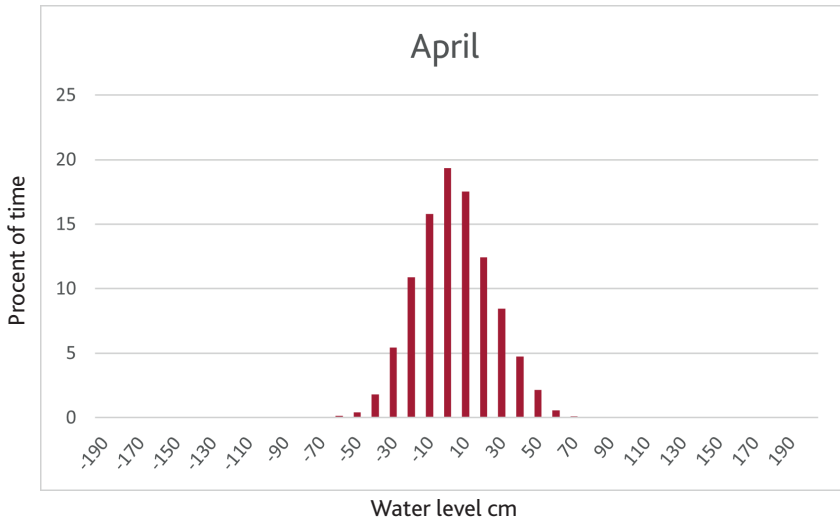


WATER LEVEL STATISTICS - 1ST QUARTER



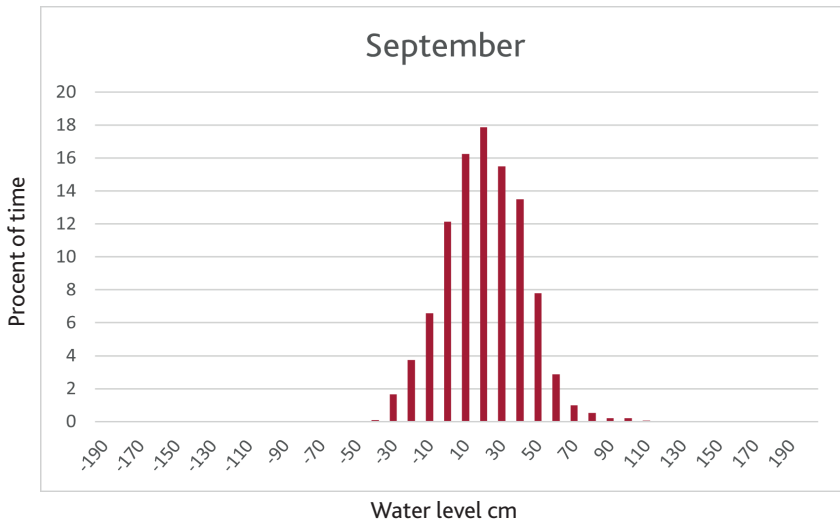
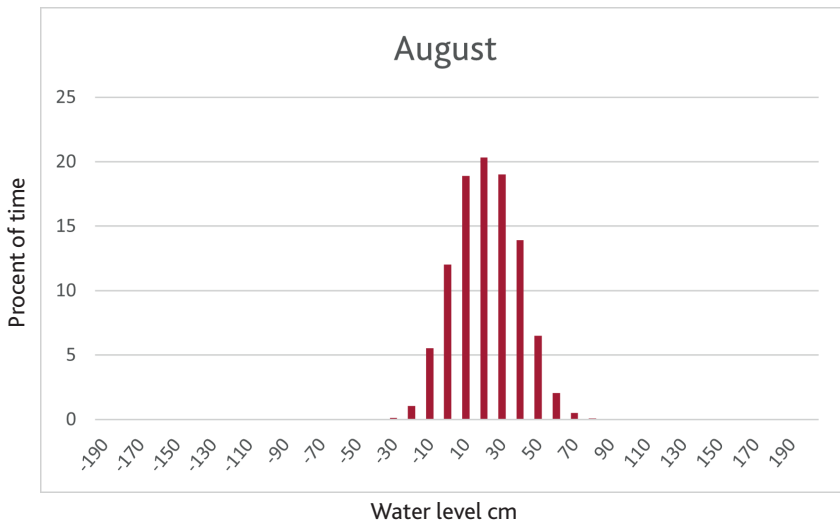
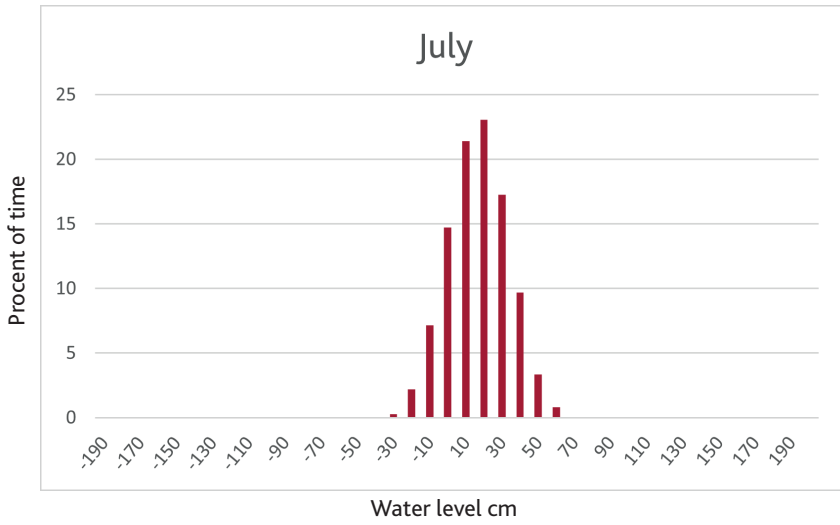


WATER LEVEL STATISTICS - 2ND QUARTER



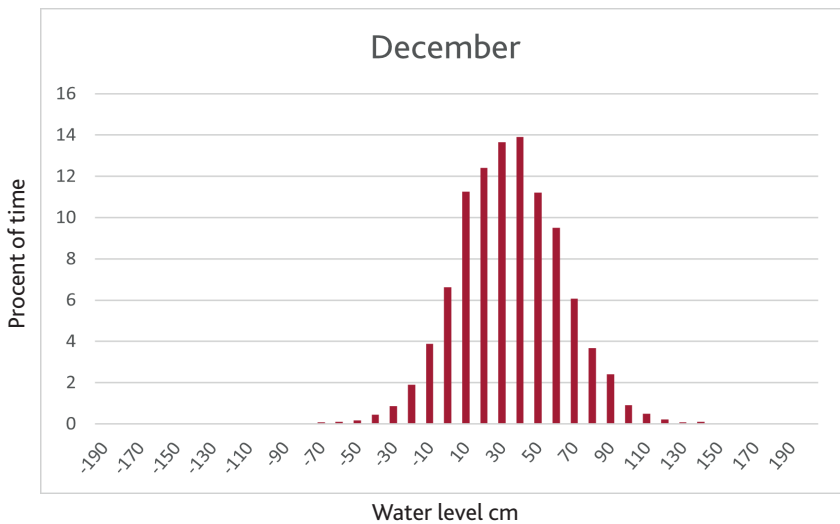
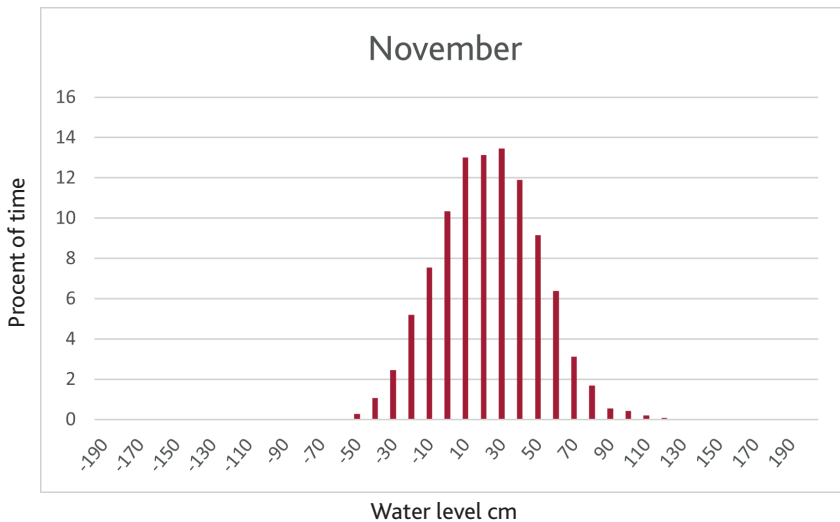
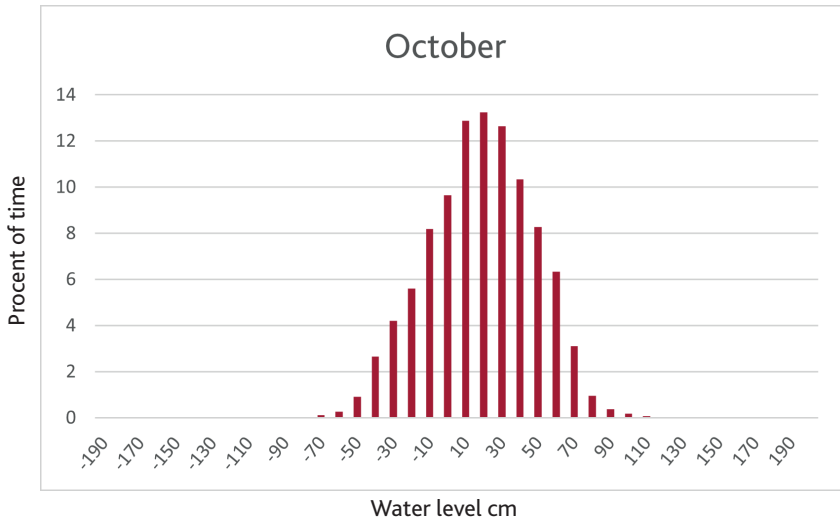


WATER LEVEL STATISTICS - 3RD QUARTER





WATER LEVEL STATISTICS - 4TH QUARTER





WAVE STATISTICS

The values indicate the percentage distribution.

cm	cm	Jan	Feb	Mar	Apr	May	Jun	Jul	Aug	Sep	Oct	Nov	Dec
0	50	15.676	23.338	25.245	39.156	45.252	30.854	27.627	26.791	32.336	18.237	15.579	14.709
50	100	45.490	44.879	43.268	34.587	34.629	38.849	43.245	43.707	38.471	43.134	42.192	31.336
100	150	23.471	21.506	22.701	17.130	14.287	19.836	18.207	19.660	15.695	22.871	23.595	29.267
150	200	8.098	7.192	6.446	7.164	5.003	8.164	8.471	6.557	8.297	10.951	13.587	14.375
200	250	3.382	2.053	2.059	1.854	0.797	1.451	1.593	1.833	3.856	3.503	3.849	7.037
250	300	2.689	0.766	0.259	0.098	0.011	0.278	0.176	0.439	0.876	1.067	0.782	1.821
300	350	0.922	0.255	0.022	0.000	0.000	0.194	0.199	0.124	0.362	0.216	0.415	0.884
350	400	0.141	0.012	0.000	0.011	0.000	0.085	0.082	0.090	0.105	0.022	0.000	0.409
400	450	0.087	0.000	0.000	0.000	0.000	0.060	0.059	0.101	0.000	0.000	0.000	0.129
450	500	0.043	0.000	0.000	0.000	0.000	0.036	0.082	0.124	0.000	0.000	0.000	0.032
500	550	0.000	0.000	0.000	0.000	0.011	0.036	0.047	0.056	0.000	0.000	0.000	0.000
550	600	0.000	0.000	0.000	0.000	0.000	0.036	0.023	0.056	0.000	0.000	0.000	0.000
600	650	0.000	0.000	0.000	0.000	0.000	0.012	0.047	0.067	0.000	0.000	0.000	0.000
650	700	0.000	0.000	0.000	0.000	0.000	0.036	0.035	0.045	0.000	0.000	0.000	0.000
700	750	0.000	0.000	0.000	0.000	0.011	0.000	0.012	0.011	0.000	0.000	0.000	0.000
750	800	0.000	0.000	0.000	0.000	0.000	0.012	0.000	0.011	0.000	0.000	0.000	0.000
800	<	0.000	0.000	0.000	0.000	0.000	0.060	0.094	0.326	0.000	0.000	0.000	0.000
Total		100.00	100.00	100.00	100.00	100.00	100.00	100.00	100.00	100.00	100.00	100.00	100.00

WAVE STATISTICS, ACCUMULATED

The values indicate the percentage distribution.

cm	cm	Jan	Feb	Mar	Apr	May	Jun	Jul	Aug	Sep	Oct	Nov	Dec
0	50	15.68	23.34	25.25	39.16	45.25	30.85	27.63	26.79	32.34	18.24	15.58	14.71
50	100	61.17	68.22	68.51	73.74	79.88	69.7	70.87	70.5	70.81	61.37	57.77	46.05
100	150	84.64	89.72	91.21	90.87	94.17	89.54	89.08	90.16	86.5	84.24	81.37	75.31
150	200	92.74	96.91	97.66	98.04	99.17	97.7	97.55	96.72	94.8	95.19	94.95	89.69
200	250	96.12	98.97	99.72	99.89	99.97	99.15	99.14	98.55	98.66	98.7	98.8	96.72
250	300	98.81	99.73	99.98	99.99	99.98	99.43	99.32	98.99	99.53	99.76	99.58	98.55
300	350	99.73	99.99	100	99.99	99.98	99.63	99.52	99.11	99.89	99.98	100	99.43
350	400	99.87	100	100	100	99.98	99.71	99.6	99.2	100	100	100	99.84
400	450	99.96	100	100	100	99.98	99.77	99.66	99.3	100	100	100	99.97
450	500	100	100	100	100	99.98	99.81	99.74	99.43	100	100	100	100
500	550	100	100	100	100	99.99	99.84	99.79	99.48	100	100	100	100
550	600	100	100	100	100	99.99	99.88	99.81	99.54	100	100	100	100
600	650	100	100	100	100	99.99	99.89	99.86	99.61	100	100	100	100
650	700	100	100	100	100	99.99	99.93	99.89	99.65	100	100	100	100
700	750	100	100	100	100	100	99.93	99.91	99.66	100	100	100	100
750	800	100	100	100	100	100	99.94	99.91	99.67	100	100	100	100
800	<	100	100	100	100	100	100	100	100	100	100	100	100



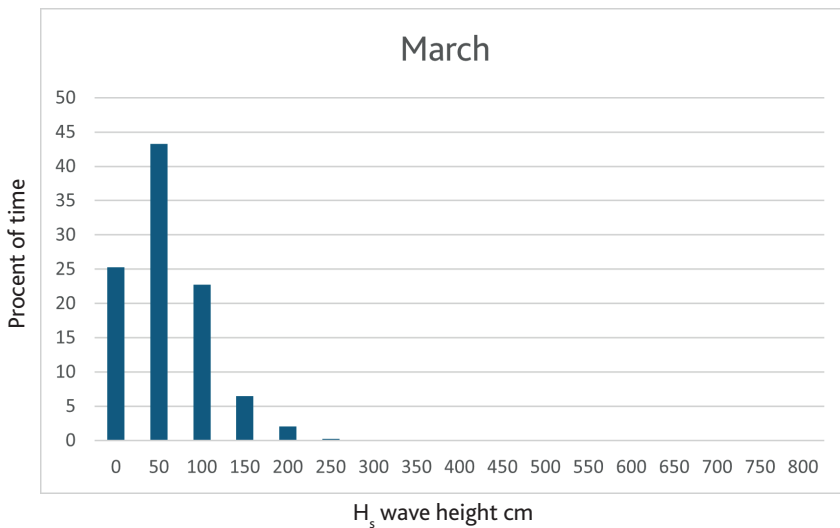
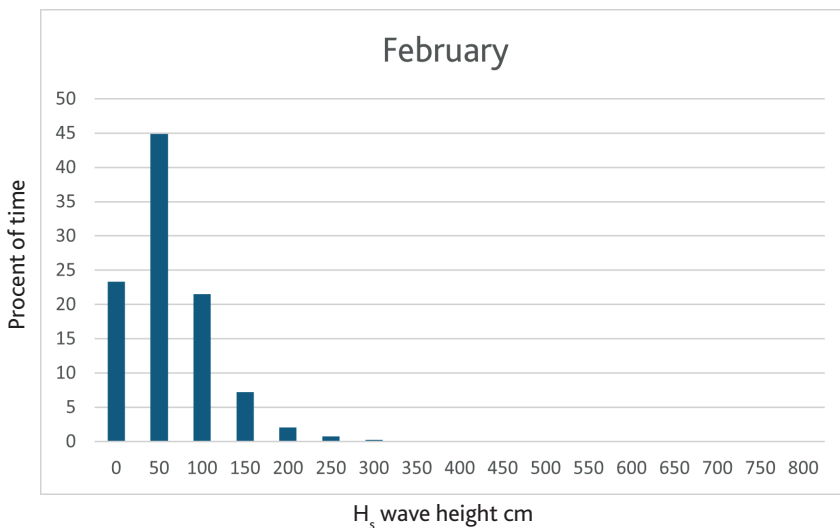
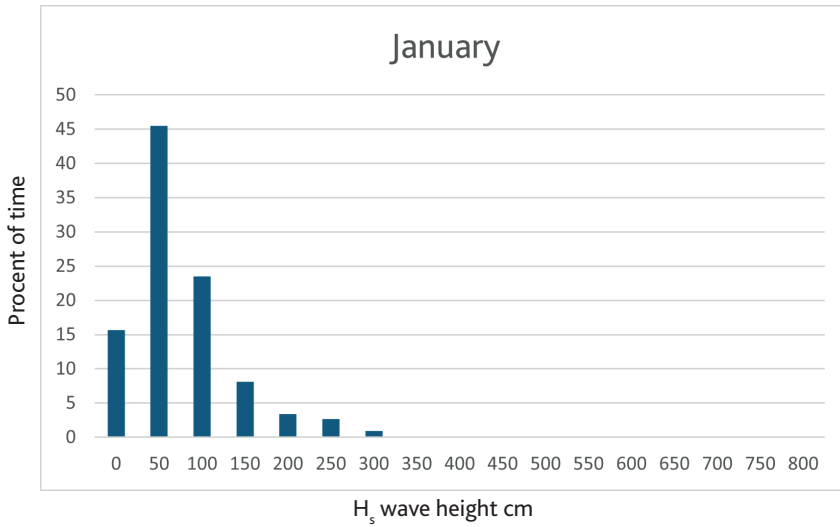
WAVE STATISTICS, INVERSE ACCUMULATED

The values indicate the percentage distribution.

cm	cm	Jan	Feb	Mar	Apr	May	Jun	Jul	Aug	Sep	Oct	Nov	Dec
0	50	84.324	76.662	74.755	60.844	54.748	69.146	72.373	73.209	67.664	81.763	84.421	85.291
50	100	38.833	31.783	31.486	26.257	20.119	30.298	29.127	29.502	29.192	38.629	42.229	53.955
100	150	15.362	10.277	8.785	9.127	5.832	10.462	10.920	9.841	13.498	15.758	18.634	24.688
150	200	7.264	3.085	2.339	1.963	0.829	2.298	2.449	3.284	5.200	4.807	5.046	10.313
200	250	3.881	1.032	0.280	0.109	0.032	0.847	0.855	1.451	1.344	1.304	1.197	3.276
250	300	1.193	0.267	0.022	0.011	0.021	0.568	0.680	1.012	0.467	0.237	0.415	1.455
300	350	0.271	0.012	0.000	0.011	0.021	0.375	0.480	0.889	0.105	0.022	0.000	0.571
350	400	0.130	0.000	0.000	0.000	0.021	0.290	0.398	0.799	0.000	0.000	0.000	0.162
400	450	0.043	0.000	0.000	0.000	0.021	0.230	0.340	0.697	0.000	0.000	0.000	0.032
450	500	0.000	0.000	0.000	0.000	0.021	0.194	0.258	0.574	0.000	0.000	0.000	0.000
500	550	0.000	0.000	0.000	0.000	0.011	0.157	0.211	0.517	0.000	0.000	0.000	0.000
550	600	0.000	0.000	0.000	0.000	0.011	0.121	0.187	0.461	0.000	0.000	0.000	0.000
600	650	0.000	0.000	0.000	0.000	0.011	0.109	0.141	0.394	0.000	0.000	0.000	0.000
650	700	0.000	0.000	0.000	0.000	0.011	0.073	0.105	0.349	0.000	0.000	0.000	0.000
700	750	0.000	0.000	0.000	0.000	0.000	0.073	0.094	0.337	0.000	0.000	0.000	0.000
750	800	0.000	0.000	0.000	0.000	0.000	0.060	0.094	0.326	0.000	0.000	0.000	0.000
800	<	0.000	0.000	0.000	0.000	0.000	0.000	0.000	0.000	0.000	0.000	0.000	0.000

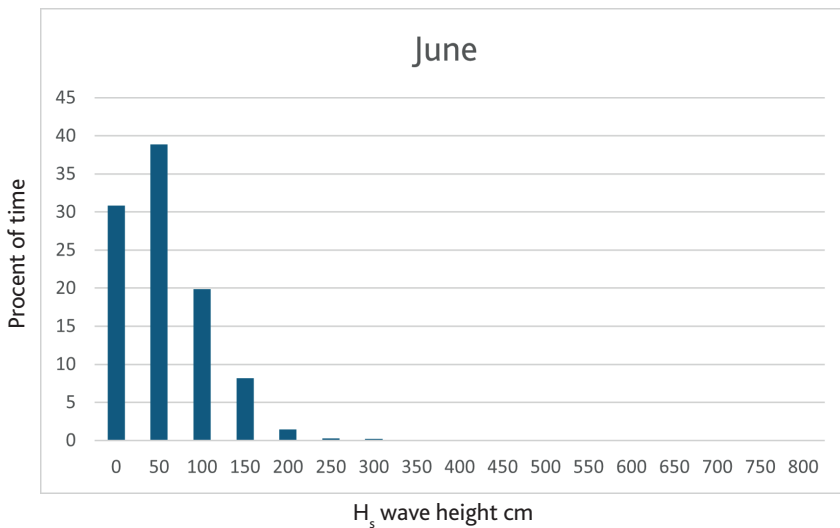
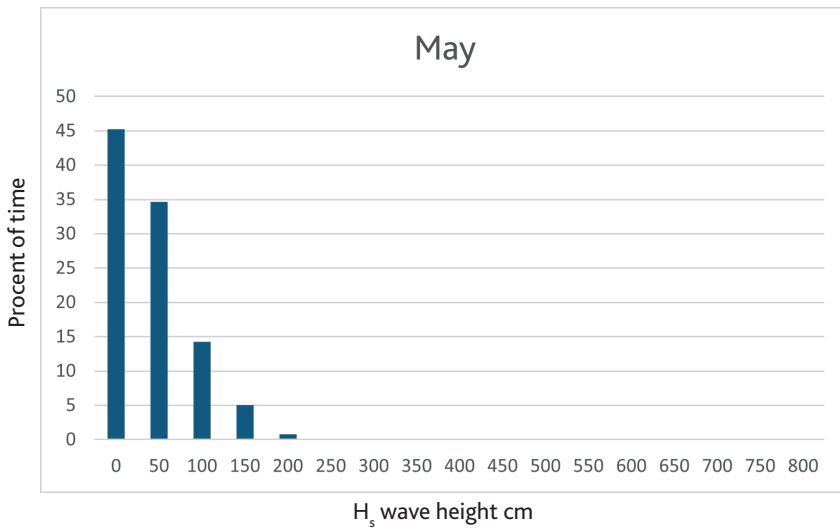
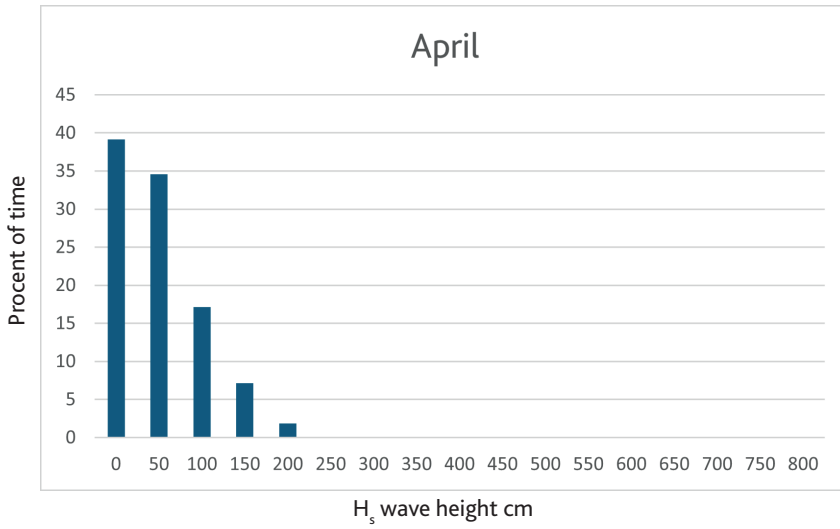


WAVE STATISTICS - 1ST QUARTER



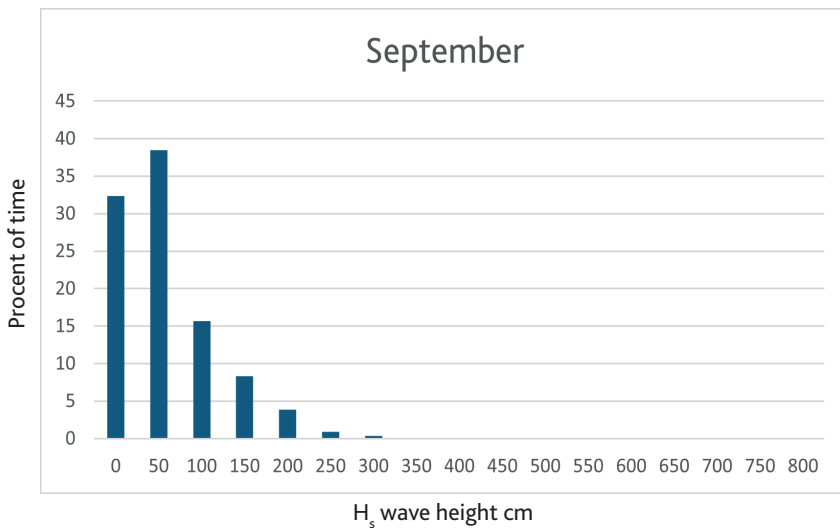
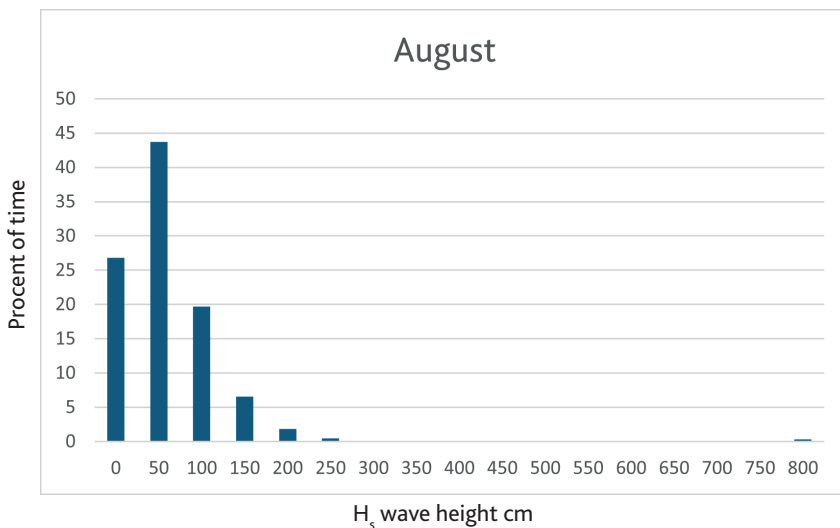
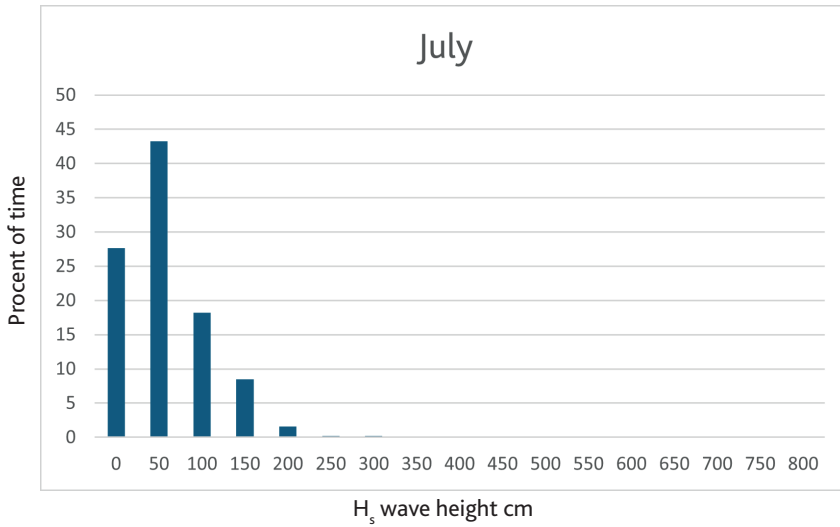


WAVE STATISTICS - 2ND QUARTER



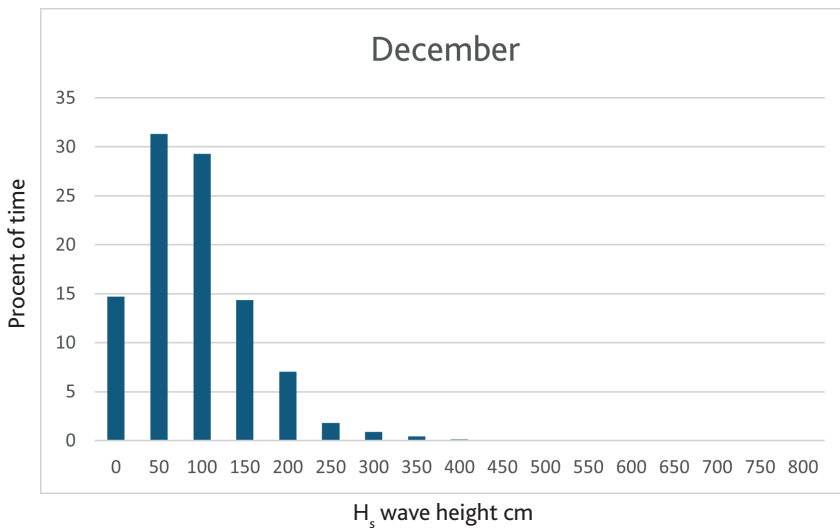
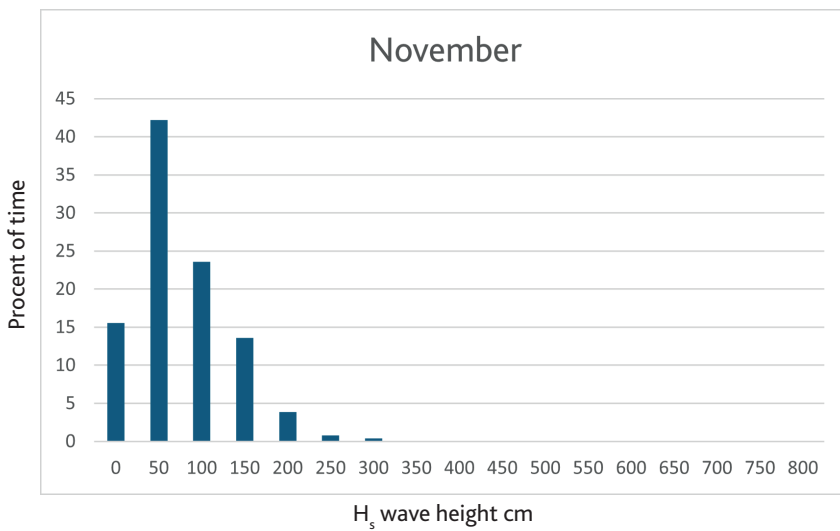
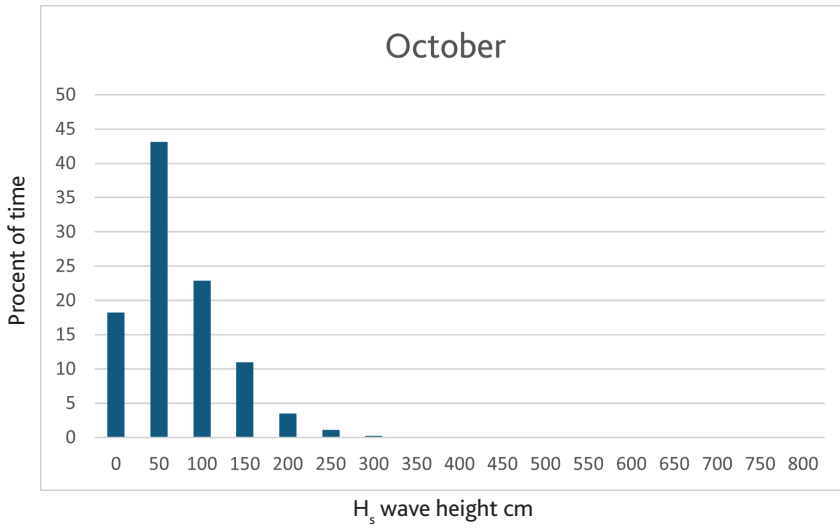


WAVE STATISTICS - 3RD QUARTER





WAVE STATISTICS - 4TH QUARTER



address	Norgeskajen 11 9850 Hirtshals
phone	+45 96 56 50 00
fax	+45 98 94 42 93
port office - 24-hour service	+45 98 94 14 22
cvr	25 86 84 55
internet	www.hirtshalshavn.dk
e-mail	hirtshalshavn@hirtshalshavn.dk